



SURREY FIRE AND RESCUE SERVICE PERFORMANCE IN GUILDFORD

GUILDFORD LOCAL COMMITTEE

9 DECEMBER 2004

KEY ISSUE

The local performance of the Fire and Rescue Service with regard to Protection, Prevention and Intervention activities of the fire stations and personnel serving the Borough of Guildford.

SUMMARY

The attached Performance Indicators (PI's) highlight the aggregated performance of the Protection, Prevention and Intervention activities within Guildford borough. (See Annexe 1.)

This report reflects selected Best Value Performance Indicators (BVPIs), which the Service is required to report upon annually, for the financial year 2003/4.

There is also, where appropriate, comparison with overall County performance and the National position of Surrey Fire & Rescue Service (the Service).

OFFICER RECOMMENDATIONS

The Committee is asked to:

- (a) Note the performance of the Service within the Guildford Local Committee area.

ITEM 15

- (b) Endorse the initiatives by the Service to undertake collaboration/ partnerships that may realise economies of scale or effort and influence behaviour in the Community.
- (c) Recognise that following evaluation of these initiatives further funding may be required in order for them to be successfully implemented.
- (d) Note the Service's initiatives to develop a targeted response to Community Safety in Guildford (See Annexe 5).

1 INTRODUCTION AND BACKGROUND

- 1.1 The Committee are asked to note that the Service operates on a County basis for provision and management of the Service with day-to-day management devolved to teams aligned to Borough Council areas.
- 1.2 Up to 22 July 2004 the County Council's statutory duties were discharged through Surrey Fire & Rescue Service under the Fire Services Act 1947. The Fire and Rescue Services Act 2004, which was given Royal Assent on 22nd July 2004, replaced this Act with a new legislative framework to ensure Fire & Rescue is better able to meet the particular challenges of the 21st Century.
- 1.3 The new legislation places on a statutory footing other activities the Service has taken on over the last 50 years since the previous legislation was put in place. These go beyond fire fighting and include rescue from road traffic collisions, responding to serious environmental disasters and the new dimensions' threat. ('New dimension' is a national term detailed by the ODPM for terrorist incidents.)
- 1.4 Under the previous Standards of Fire Cover under the old Act, risk is quantified by the potential for spread linked to congestion of buildings and occupancy, with 6 risk categories: Special, A, B, C, D and Remote Rural. The Service has developed an Integrated Risk Management Plan (IRMP) as required by the Office of the Deputy Prime Minister. It was decided that currently the Standards of Fire Cover would continue to be used while a suitable fire risk management model has been tailored to the needs of Surrey. In Surrey, Guildford town centre classified as 'B' risk requiring the attendance of 2 appliances, 1 within 5 minutes and the second within 8 minutes. The remainder of Guildford borough was determined as being either 'C' or 'D' risk with attendance times of within 10 and 20 minutes respectively.
- 1.5 Presently the location of fire stations and the number of appliances are both determined by the requirement to meet these recommended attendance times crewed by whole-time and retained personnel providing an immediate or delayed response to attendance times. Wholetime cover is provided on a two-shift basis per 24hrs.

Retained personnel are employed to give a composite 24hr total cover for the station. This is becoming more difficult to achieve especially during the daytime period where local employers are becoming reluctant to release personnel, and where self-employed retained members work outside the area.

ITEM 15

- 1.6 The Service ensures that owner/occupiers of certain residential and non-residential premises fulfil their statutory obligations as to the risk of fire. The Service inspects a number of premises, and where necessary the Service will issue a prohibition notice restricting in total or partially the use of such premises until action has been taken to reduce the risk of fire.
- 1.7 The Service is attempting to reduce the frequency of unwanted Automatic Fire Alarm calls through advice on preventative measures to owner/occupiers of premises that have a history of incorrect activation.
- 1.8 The Service aims to be pro-active in reducing the occurrence of fire in the community. This reports details the occurrence of accidental fires per 10,000 dwellings and associated injuries or fatalities and each confirmed property fire attended, if the fire had been confined to the room of origin. To reduce the number of fire incidents the Service is employing a number of strategies and initiatives linked to education of the community on fire prevention measures and actions to take in the event of a fire occurring. These initiatives include: -
- Youth educational objectives centred on nursery activity boxes, school competitions, curriculum input at key stages 1-3 and participation in the junior citizens programme. These are complimented by IT and other interactive arrangements at suitable venues.
 - For young people who have shown an unhealthy interest in playing with fire, the Service, along with the Youth Offending Team, has a direct intervention scheme available known as the 'Firewise' scheme. Where a young person has given a cause for concern, they can be referred to the service. Specially trained advisors are then assigned to work with the young person to reduce the risk to both themselves and those around them.
 - The owner/occupiers of premises where persons are employed to work have statutory obligations to manage the risk of fire in their premises. The service inspects a sample of premises each year to ensure that these obligations are met. The Service will advise the responsible person on the adequacy of their risk assessment. Where necessary they can issue an enforcement notice to ensure compliance. Under extreme circumstances a prohibition notice can be issued, restricting in total or partially the use of such premises, until action has been taken to reduce the risk to occupants from fire.
- 1.9 The Service strategies and operating procedures to reduce the number of fires and their associated effects are co-ordinated and developed, with local stations being encouraged to promote targets developing a borough plan for their individual community and Local Committee areas.
- 1.10 The location and high frequency of incidents where the Service is called to road traffic collisions (RTCs) is influenced by the strategies on road transport both locally and nationally. The Service is able to provide statistics that can complement those identified by the County Council Transportation Service to identify the location and seriousness of incidents, and if possible influence any potential improvement.

- 1.11 The Committee is asked to note that the eight Service Delivery Standards of the Service's expectations in various boroughs and a full explanation are detailed in Annex 3.

- | | |
|--------------------------------------|-----------------------------|
| 1 - Community Safety | 5 - Operational Planning |
| 2 - Human Resource Management | 6 - Intervention Management |
| 3 - Premises, Vehicles and Equipment | 7 - Customer Relations |
| 4 - Training/Development | 8 - Statutory Fire Safety |

2 ANALYSIS AND COMMENTARY OF BEST VALUE AND OTHER PERFORMANCE STATISTICS

(See Annexe 1 for performance results of indicators in bar chart format. Details of other indicators listed here are available on request – please contact the Guildford Community Support Team on 01483 517 336.)

BVPI 142i – Total Number of Fire Calls (FDR1/FDR3)

BVPI 142ii – Total Number of Primary Fires (FDR1 Including Vehicles)

BVPI 142iii – Accidental Dwelling Fires

BVPI 143i – Accidental Dwelling Fire Deaths

BVPI 143ii – Accidental Dwelling Fire Injuries

BVPI 144b – Accidental Dwelling Fires Confined to Room of Origin.

BVPI 144c- Accidental Dwelling Fires Confined to Room of Origin in 'b' risk areas

BVPI 144d – Accidental Dwelling Fires Confined to Room of Origin in 'd' risk areas

BVPI 145a – Number of appliances where standards of fire cover were met

BVPI 145b – Number of Riders Where Standards of Fire Cover Were Met

BVPI 145c –Attendance Times (FDR1's – Property Including AFA's)

BVPI 146 – Malicious False Alarms (Hoax Calls)

BVPI 149 – Automatic False Alarm (AFA)

OPS 7 RTC Extrication by Service

OPS 7 RTC Services Rendered

OPS 7 RTC No Action

Local Committee contributions to Fire & Rescue Service initiatives 2003/2004 (ANNEXE 2).

3 OPTIONS

- 3.1 The Integrated Risk Management Planning process supports safer communities through change. The Fire & Rescue Act 2004 details the core functions of the Fire Authority as:
- Fire Safety (Protection/Prevention)
 - Fire-Fighting (Extinguish/Training/Risk Information)
 - Road Traffic Accidents (Attend/Prevent)
 - Emergencies (Personnel/Equipment)
 - Particular Fires & Emergencies (Major Incidents/Terrorism)
 - Other Eventualities (Environmental)
 - Other Services (New Dimension)
- 3.2 It is recognised that recommendations in the SCC Best Value Review of Fire Cover in Surrey, completed in 2000, identified that local communities need to be engaged in ensuring the recruitment, retention and availability of retained personnel. This is still applicable and should be encouraged.
- 3.3 It is hoped that the Committee will continue to support the achievements of Retained Stations and its profile in the community. Examples of previous support are Members' attendance at the Station Open Days 2003 and acknowledgement of those employers (including the self-employed) who release staff on retained duties.
- 3.4 It is hoped that the Committee will continue to endorse and support all, or any, of the following initiatives to reduce the potential number of fires and their tragic effects within its area:
- (a) Exerting influence on local planning arrangements to promote the use of residential and non-residential sprinklers. The service will support Members by providing where necessary promotional material on the use of residential sprinklers for housing associations, Housing Directors and other influential groups. The views of GBC Members are particularly sought on this matter.
 - (b) Supporting the arrangements and if necessary fund the provision of smoke detectors for those within the local community who have been identified as vulnerable persons who have not yet had the opportunity of purchasing or fitting this life-saving device.
 - (c) Supporting the arrangement and provisions of smoke detection to vulnerable individuals through partnership with development of Guildford Borough Council Emergency Communications Service. See Annexe 4.
 - (d) Supporting the Safer Guildford Partnership through joint arrangements that reduce the crime of arson requiring the attendance of the Service. The Service Borough Manager for Guildford is a member of the Safer Guildford Executive.

ITEM 15

- (e) Encouraging other local service agencies to advise the Service of any fire safety problems through their day-to-day contact with the community (e.g. home care assistants).
- (f) Supporting youth educational objectives within the nursery and schools network, inclusive of parents, to endorse fire safety messages.
- (g) Encouraging the potential of joint use of resources such as premises where other agencies could utilise the image and social status of the Service to influence behaviour of local residents or groups.
- (h) Encouraging fuller networking between services reporting to this committee to encourage social cohesion.

4 CONSULTATIONS and PARTNERSHIPS

4.1 The development of a borough-based management structure has enabled the Surrey Fire & Rescue Service to proactively engage and consult a range of partners that include the following.

- Safer Guildford Partnership Executive and Joint Action Group
- Guildford Borough Council Building Control
- Guildford Borough Council Environmental Health
- Pubwatch
- Heritage Owners/Agencies
- Police
- Surrey County Council Traffic and Road Safety, Guildford Local Committee
- Business/Community Groups
- Surrey County Council Risk Management
- SCC Adults and Community Care Service
- Mobile Library Services
- Surrey County Council Community Services

5 FINANCIAL IMPLICATIONS

5.1 For those Local Committees that have contributed funds as indicated in Annexe 2 there are no immediate financial implications identified until the joint working arrangements with other departments have been achieved. These are the provision of smoke detectors to identified vulnerable groups, sponsored equipment or other arrangements. However, as previously raised at this Committee because there is no direct funding available to the Service to undertake additional activity within its current budget allocation on statutory obligations, the Committee is encouraged to recognise that additional funding might be required if further options are to be explored.

6 SUSTAINABLE DEVELOPMENT IMPLICATIONS

6.1. All of the above initiatives, if successfully implemented, continue to support the principles of sustainable development of the community as a whole.

ITEM 15

- 6.2. The Committee is asked to note that all new Volvo appliances are fitted with a Particulate Trap that removes 98% of all harmful particles produced from the diesel.
- 6.3. The Surrey Fire & Rescue Service only uses low sulphur diesel in all its diesel appliances and cars.

7 CRIME AND DISORDER IMPLICATIONS

- 7.1. The link between abandoned cars and arson is proven and any decrease in the former will influence the later. The Service is working with the Waste Management Service at Guildford Borough Council on initiatives to reduce fire incidents involving abandoned cars and trade waste.
- 7.2. The perception of the Service by some members of the community as being non-confrontational may offer an opportunity to reduce re-offending or give direction through the use of fire fighters as positive role models.
- 7.3. The Safer Guildford Partnership and its Joint Action Group (JAG) are fully supported through membership and strategic involvement.

8 EQUALITIES IMPLICATIONS

- 8.1. The success of any of the above initiatives could have a direct effect on certain groups in the community who will be those most at risk or who come from a background of disenfranchisement and/or under representation.

9 CONCLUSION AND REASONS FOR RECOMMENDATIONS

- 9.1. The Committee is asked to note the performance of the Service, recognise the potential offered by implementation of the proposed initiatives and where applicable endorse recommendations a-c.

Report by: Assistant Divisional Officer Bob Weldon-Gamble - Surrey Fire & Rescue Service

LEAD/CONTACT OFFICER: Bob Weldon-Gamble
Assistant Divisional Officer and Service
Borough Manager for Guildford

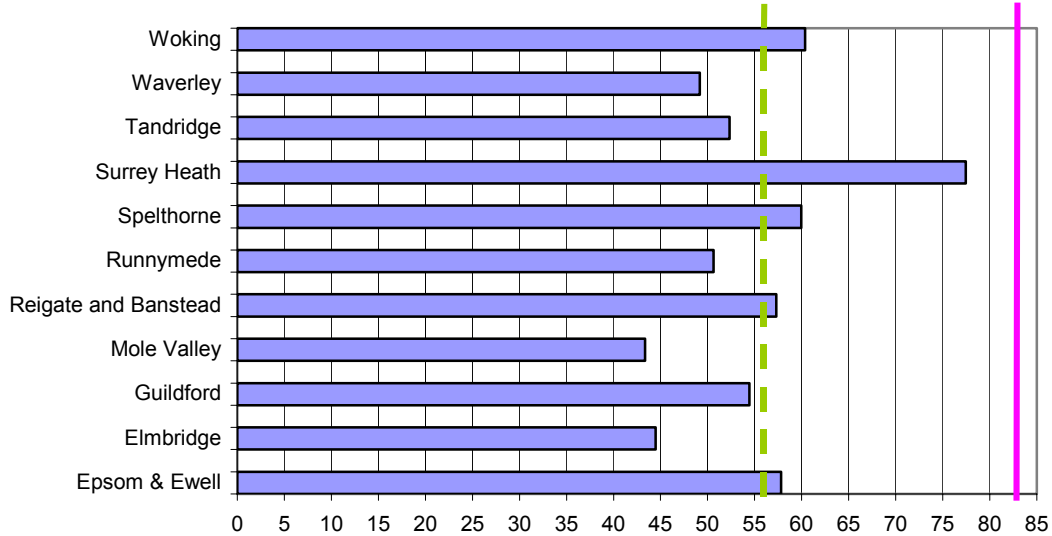
TELEPHONE NUMBER 07968 834 471 (Mobile)

E-MAIL bobwg@surreycc.gov.uk

BACKGROUND PAPERS: None

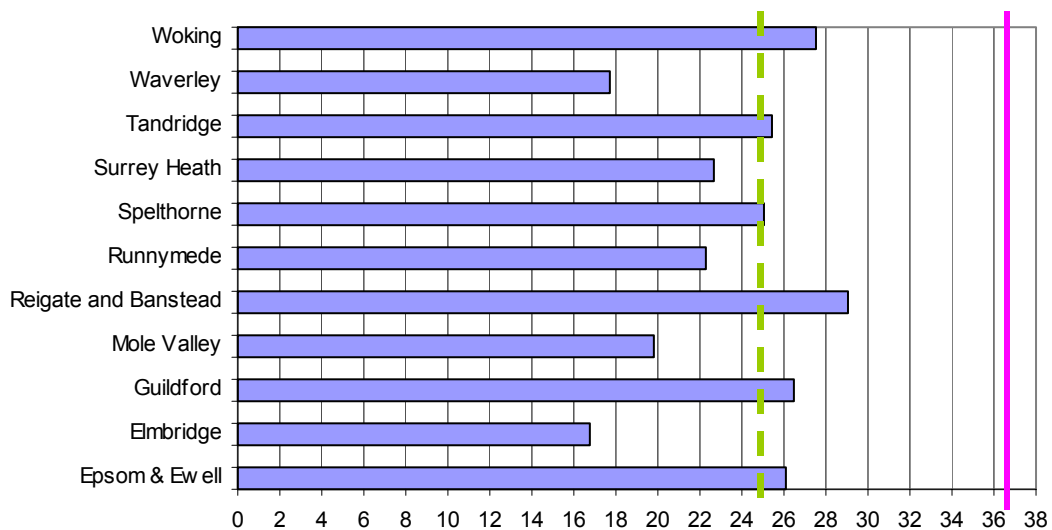
Best Value Performance Indicators for Surrey Fire and Rescue Service

BVPI 142i: Total fires per 10,000 population by Local Committee area



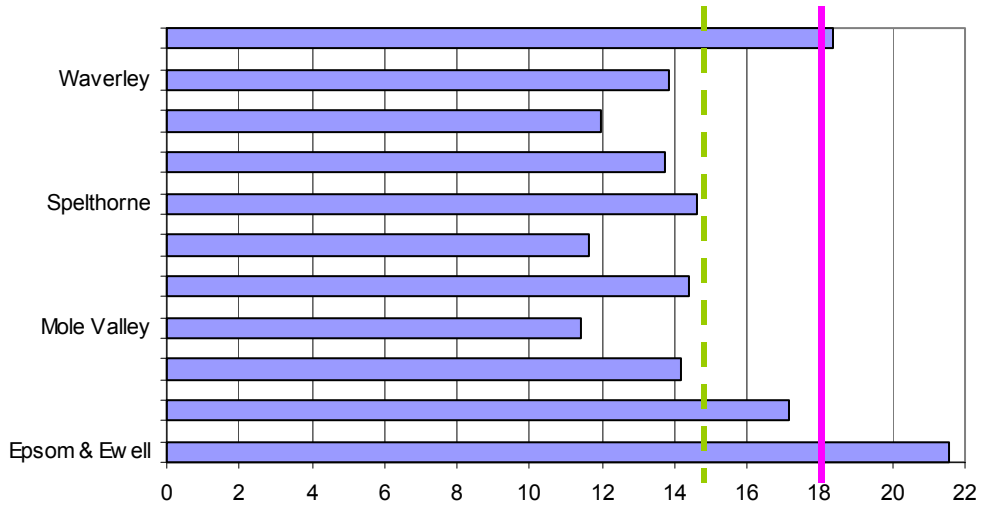
————— **National Average 02/03** 84.69
- - - - - **Surrey Global 03/04** 56.17

BVPI 142ii: Primary fires per 10,000 population by Local Committee area



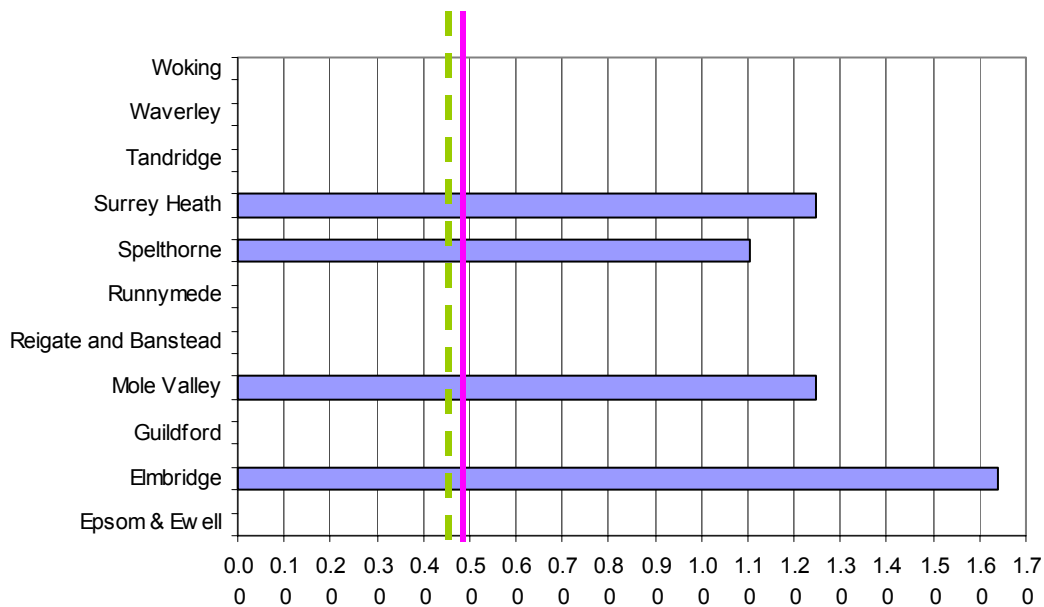
————— **National Average 02/03** 36.13
- - - - - **Surrey Global 03/04** 24.70

BVPI 142iii: Accidental Dwelling Fires per 10,000 dwellings by Local Committee area



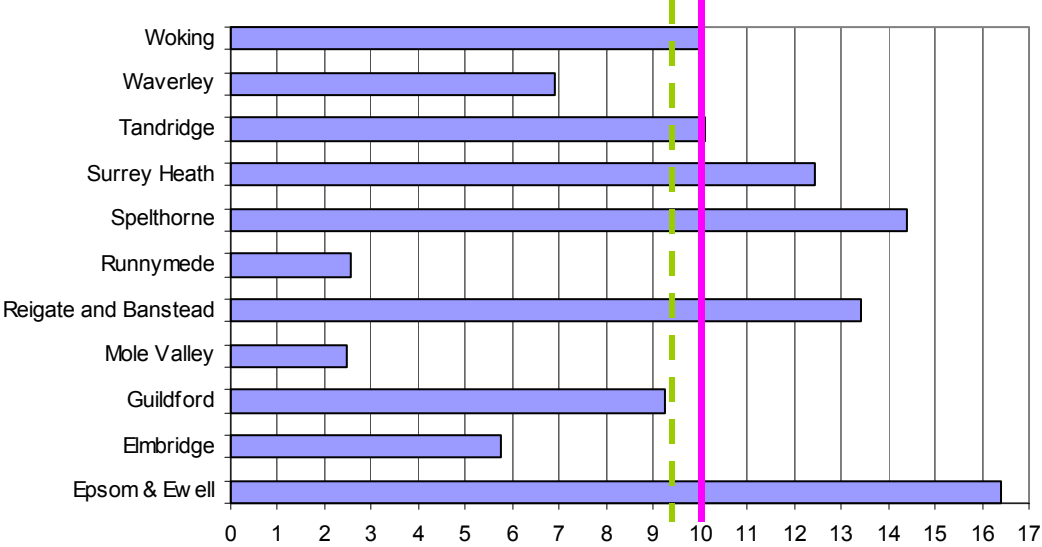
——— **National Average 02/03** 18.02
- - - - - **Surrey Global 03/04** 14.79

BVPI 143i: Deaths from Accidental Dwelling Fires per 100,000 population by Local Committee area



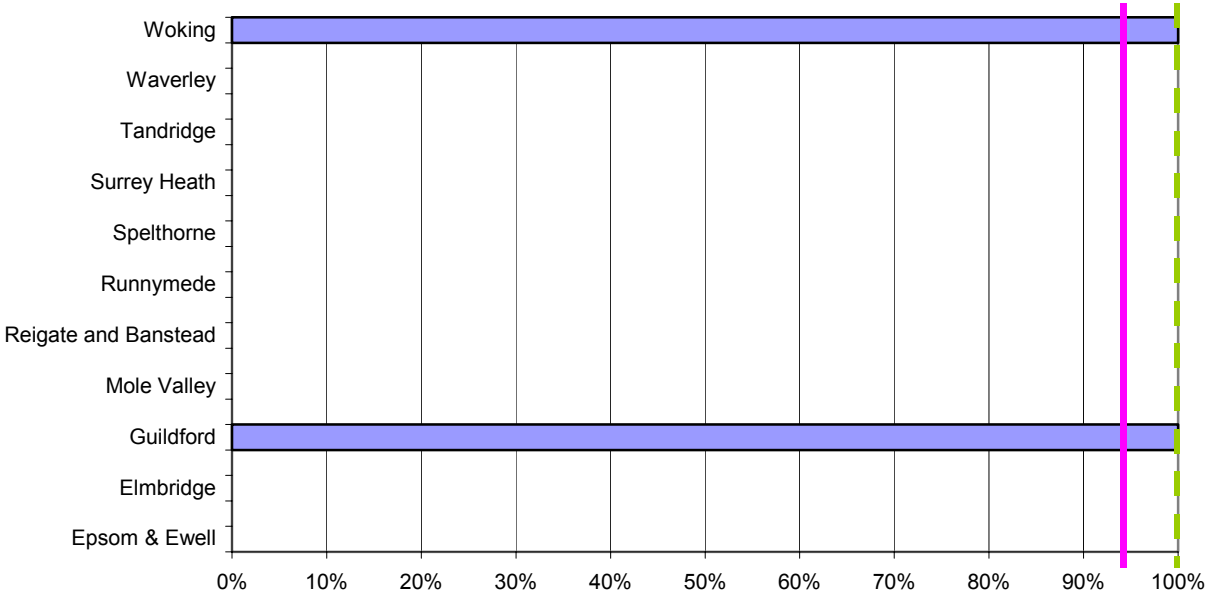
——— **National Average 02/03** 0.49
- - - - - **Surrey Global 03/04** 0.47

BVPI 143ii: Injuries from Accidental Dwelling Fires per 100,000 population by Local Committee Area



— **National Average 02/03** 10.01
- - - **Surrey Global 03/04** 9.35

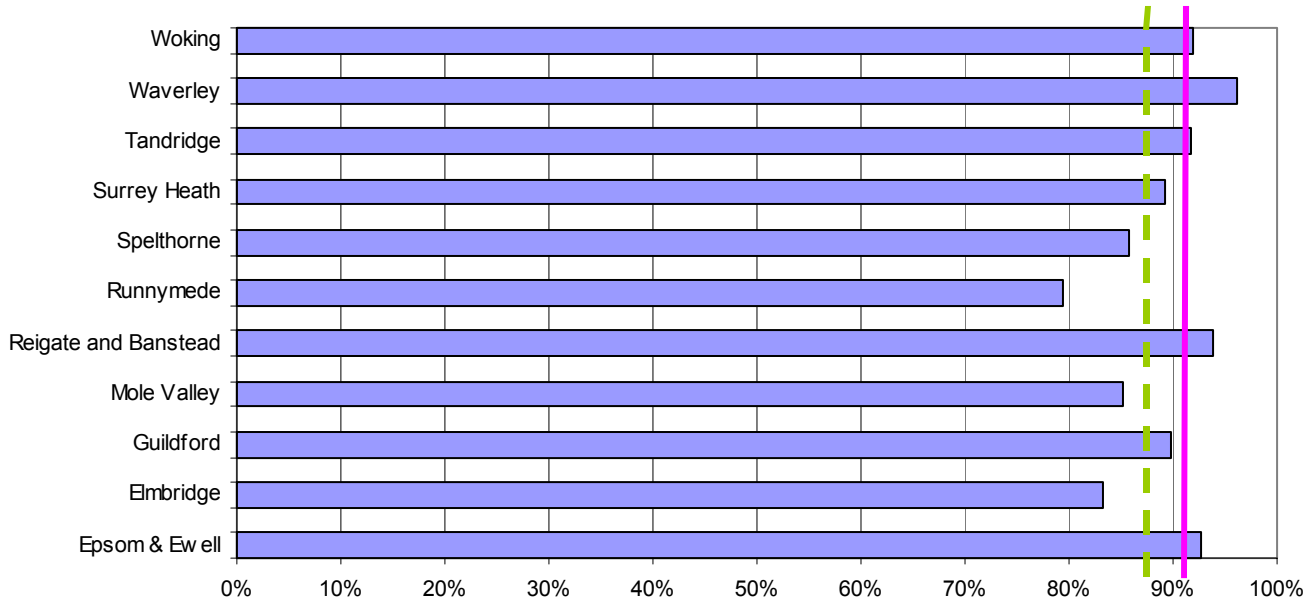
BVPI 144b: ADFs confined to room of origin in "B" risk areas by Local Committee area



— **National Average 02/03** 94.06%
- - - **Surrey Global 03/04** 100.00%

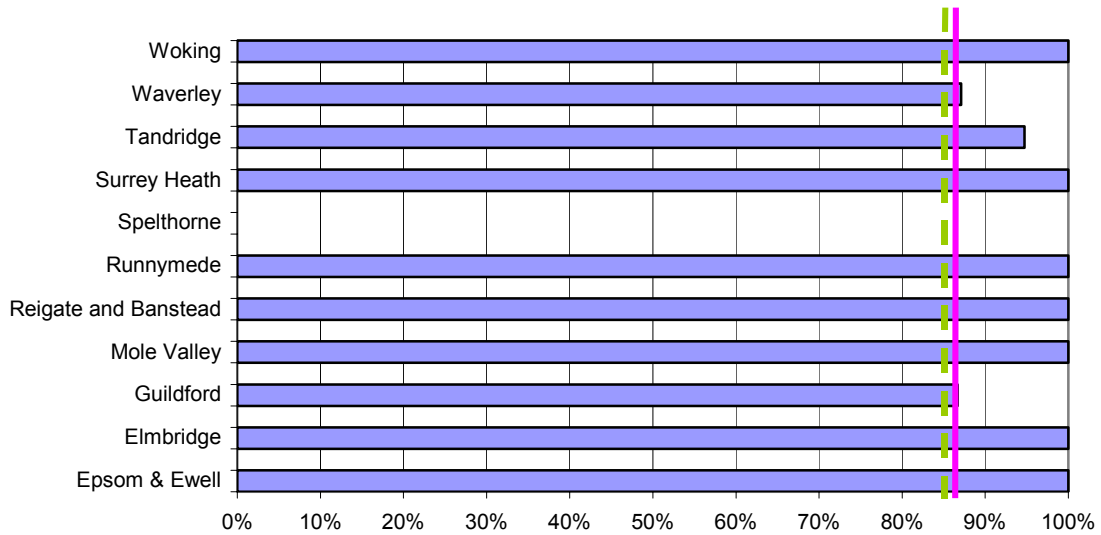
Item 15 Annexe 1

BVPI 144c: ADFs confined to room of origin in "C" risk areas by Local Committee area



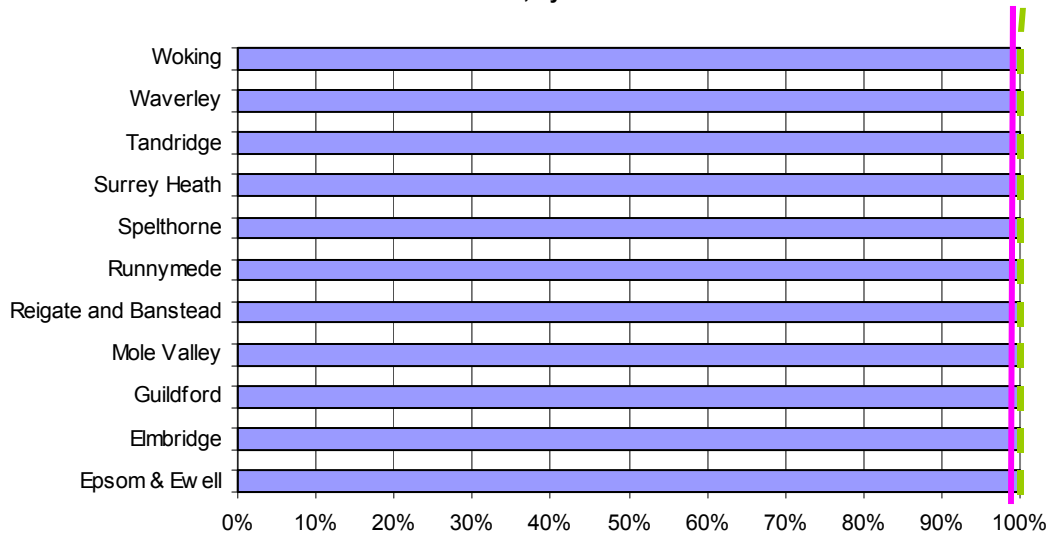
————— **National Average 02/03** 91.90%
- - - - - **Surrey Global 03/04** 88.89%

BVPI 144d: ADFs confined to room of origin in "D" risk areas by Local Committee area



————— **National Average 02/03** 86.60%
- - - - - **Surrey Global 03/04** 86.14%

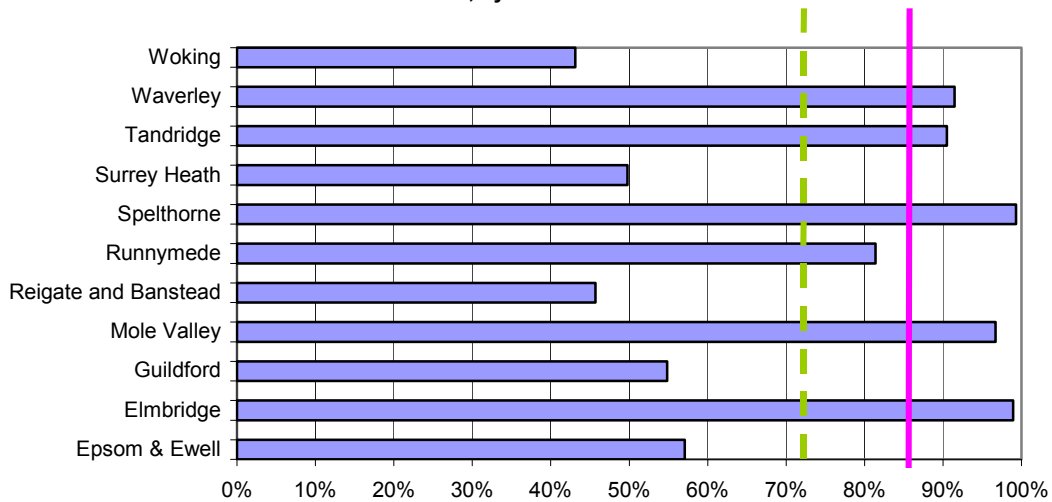
BVPI 145a: Percentage of incidents at which the number of appliances met the standards of fire cover, by Local Committee area



National Average 02/03 99.20%

Surrey Global 03/04 100.00%

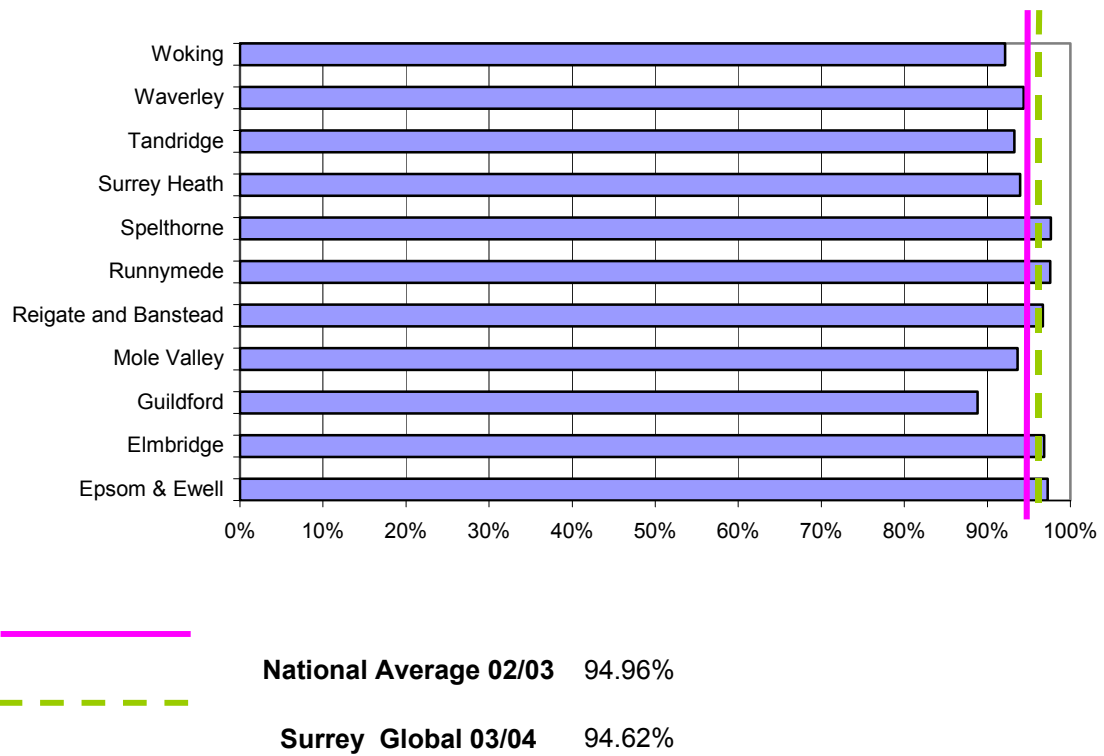
BVPI 145b: Percentage of incidents at which the number of riders met the standards of fire cover, by Local Committee area



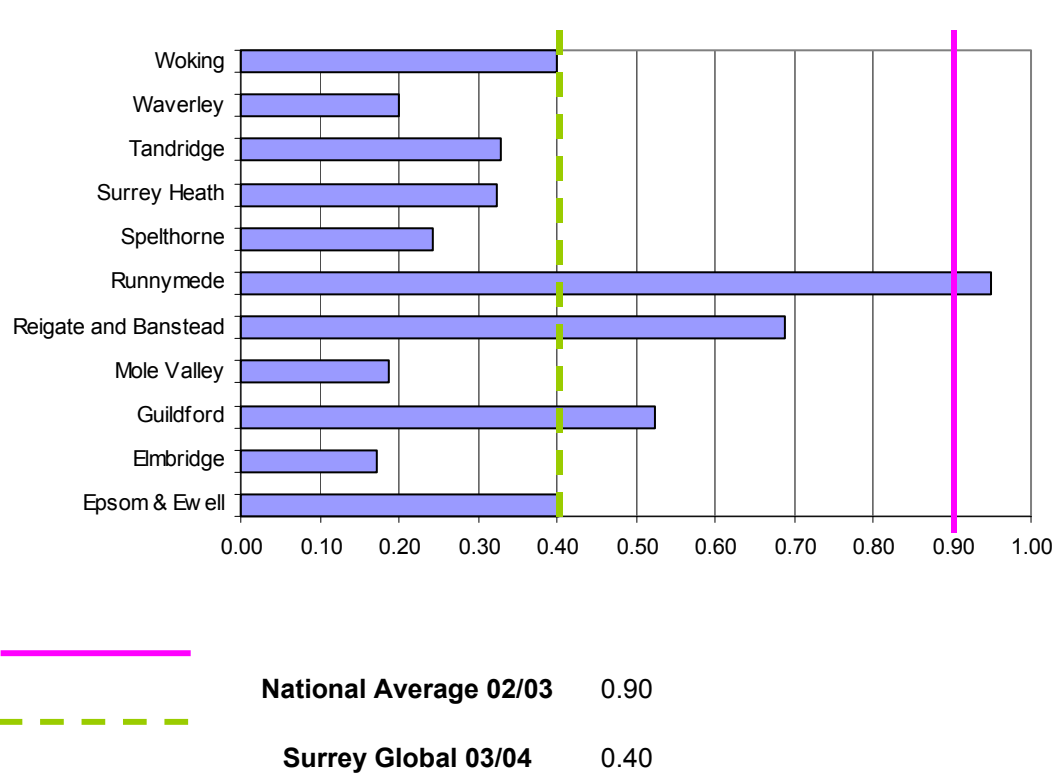
National Average 02/03 87.53%

Surrey Global 03/04 72.45%

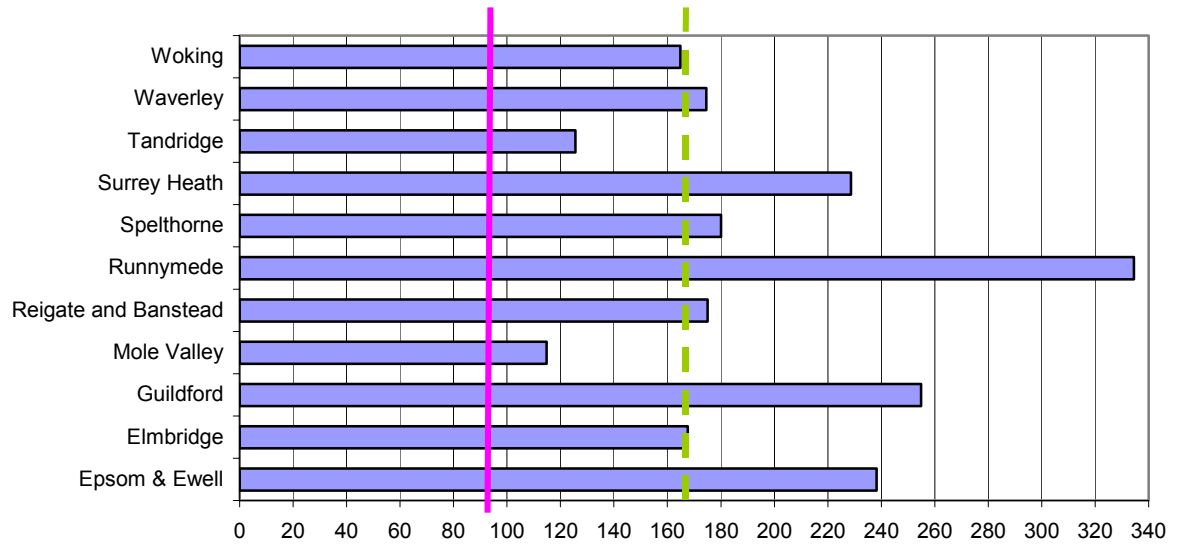
BVPI 145c: Percentage of incidents at which attendance times met the standards of fire cover, by Local Committee area



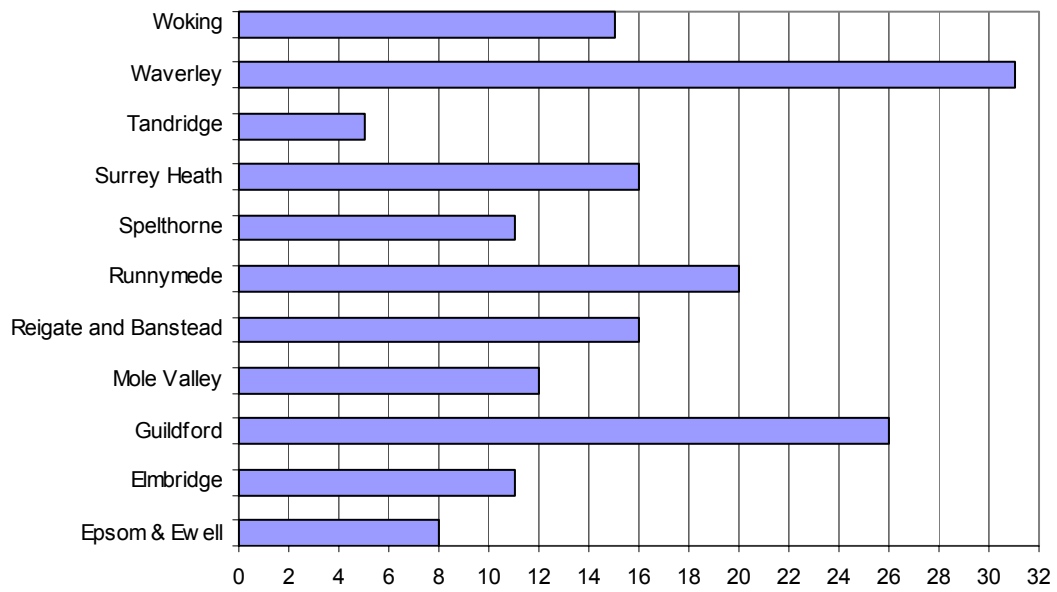
BVPI 146: Malicious FAs per 1,000 population by Local Committee area



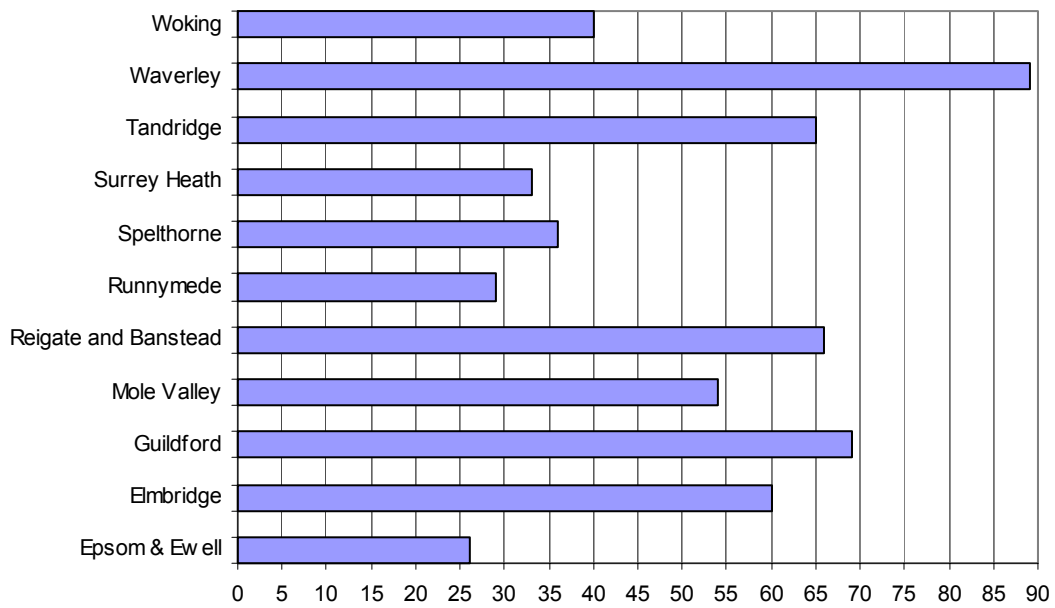
BVPI 149: Automactic False Alarms per 1,000 non-domestic properties by Local Committee area



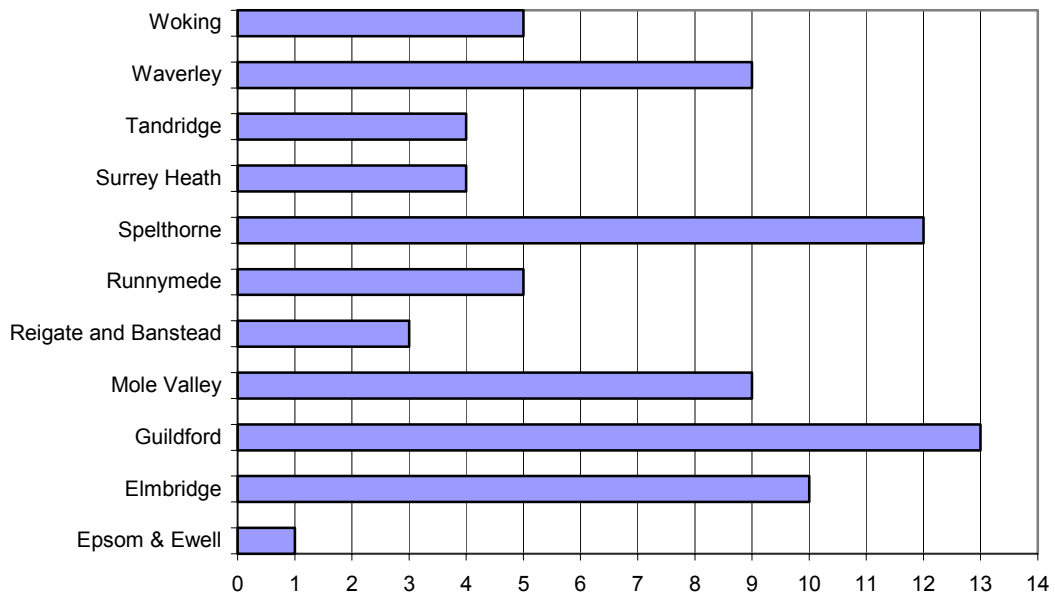
OPS 7: RTC Extrication by Service



OPS 7: RTC Services Rendered



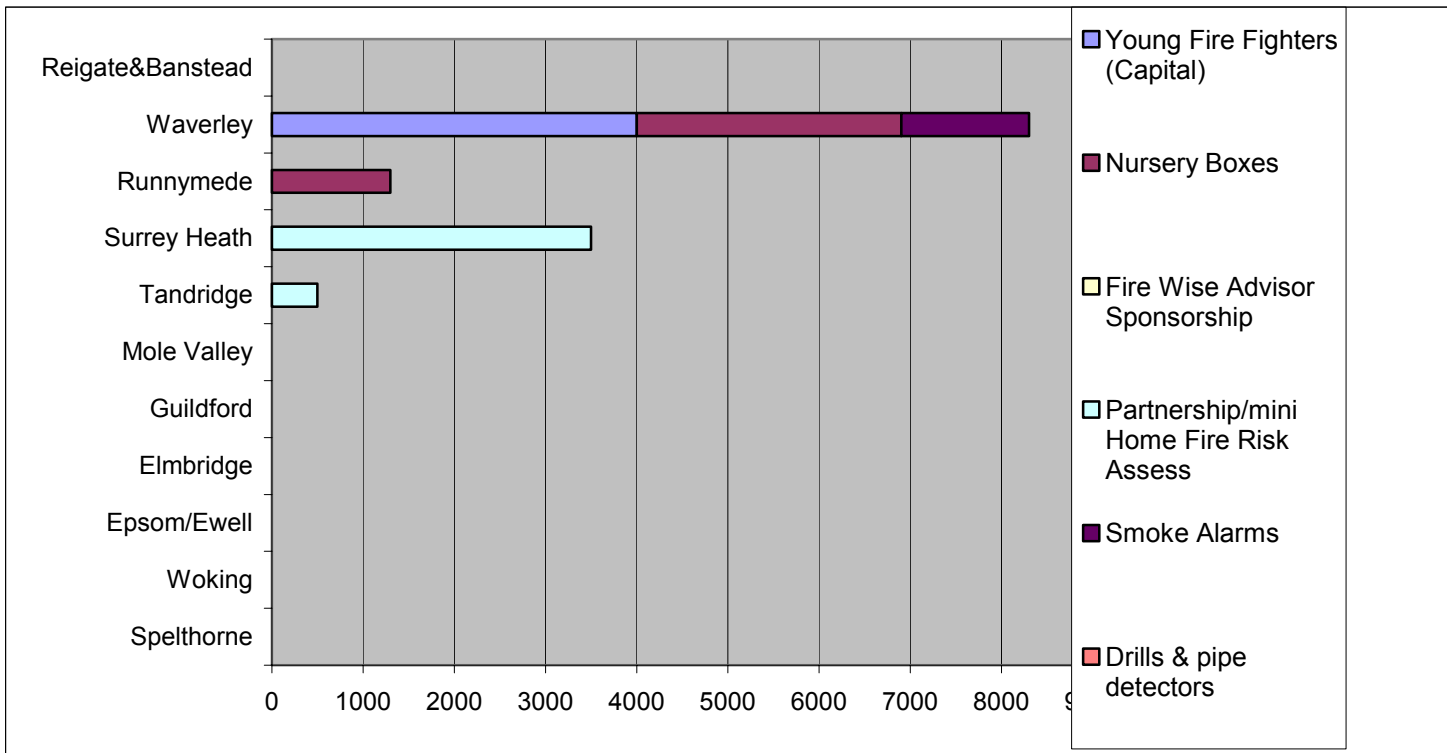
OPS 7: RTC No Action



Community Fire Safety Activities 2003/2004

	Guildford	Surrey Average
Firewise Intervention Scheme cases	5	4.6
Junior Citizens Activity Officer days	22	11.8
Schools Key Stage 1 talks	21	13.5
Schools Key Stage 2 talks	19	7.9
Schools Key Stage 3 talks	3	3.1
Outdoor Fires (Arson/Suspicious)	100	87.5
Premises Fires (Arson/Suspicious)	39	35.6
Car Fires (Arson/Suspicious)	115	65.6
Prohibition / Restriction Notices served	1	.9
Residential Premises Inspections	154	91.8
Non-Residential Premises Inspections	485	252.1
Local Partnership Working Inspections	378	217.5
Certificated Premises Inspections	531	270.6

Local Committee Contributions to Initiatives
£ thousands



Service Delivery Standards

The following eight Service Delivery Standards set out the Service's expectations of the various borough/district management teams. They aid managers to focus on activities that support service delivery and provide a consistent monitoring tool for senior managers.

Service Delivery Standard 1 - Community Safety

- **Borough/District Teams are proactive in improving community safety**

Service Delivery Standard 2 - Human Resource Management

- Sufficient numbers of competent personnel available to meet service delivery requirements.
- Encourage diversity and eliminate unfair treatment and discrimination through the full range of personnel and management.

Service Delivery Standard 3 - Premises, Vehicles and Equipment

- All service delivery equipment and vehicles are available at all times.
- Authority premises are regularly inspected and maintained, and are accessible to the community.

Service Delivery Standard 4 - Training/Development

- Personnel deliver the service competently
- Personnel have opportunities for development
- Staff welcome diversity and respect the rights and contributions of others

Service Delivery Standard 5 - Operational Planning

- The appropriate resources are mobilised so that they arrive within the recommended national standards
- Risk on station grounds are continually reviewed
- Help the District / Borough and other public bodies plan and prepare for emergencies
-

Service Delivery Standard 6 - Intervention Management

- Fires and other emergencies are competently resolved.

Service Delivery Standard 7 - Customer Relations

- Service Delivery provides prompt, efficient and courteous service.

Service Delivery Standard 8 - Statutory Fire Safety

- The Service applies and enforces the Fire Precautions Act 1971
- The Service applies and enforces the provisions of the Fire Precautions (Workplace) Regulations 1997 (as amended).

The Service establishes and maintains effective consultation with other enforcing Authorities with regard to fire safety standards.

**BUSINESS CASE FOR PARTNERSHIP WORKING BETWEEN SURREY FIRE
AND RESCUE SERVICES AND GUILDFORD BOROUGH COUNCIL TO
PROVIDE MONITORED SMOKE DETECTORS TO ELDERLY AND
VULNERABLE RESIDENTS IN SURREY.**

Other local authorities particularly in the Greater London area have launched similar strategies. This service would also fit in with the Councils strategies on community safety and assisting with independent living initiatives.

Guildford Borough Councils Central Emergency Communications System (CECS) has provided a lease service for social alarms to residents in the borough for the past nineteen years. The service currently provides the client with an alarm unit (Lifeline) and radio trigger (Pendant), which is linked to the control centre by means of a standard domestic telephone line.

The cost to the client is currently £3.50 per week / £182 per annum, which includes all the equipment, monitoring twenty four hours a day, three hundred and sixty five days a year, two checks per year and a response service if the client contacts are not available. This service is currently provided to 850 residents in Guildford Borough.

The CECS is now introducing a number of additional packages to residents in the Borough, which include the use of additional sensors that work in conjunction with the Lifeline unit. Examples of the packages are as follows:

Package 1 - Home Safety

This package will be aimed at all households in the borough and not just elderly and vulnerable residents. The package will include the following:

Lifeline 400 (alarm unit)
2 Radio Smoke Detectors
2 Passive Infrared Detectors (intruder detectors)
2 Flood Detectors
Key Safe

The monthly cost to the client for this package including monitoring will be £50.28

Package 2 – Falls Detection (A)

This package will be aimed at elderly and vulnerable residents who are at risk of falling and would benefit from assisted technology in order to remain independent and in their own homes. The Package will include the following:

Lifeline 400 (alarm unit)
Fall Detector
2 Passive Infrared Detectors (Inactivity monitoring)
Key safe

The monthly cost to the client for this package including monitoring will be £30.19

Package 3 – Falls Detection (B)

This package will be aimed at elderly and vulnerable residents who are at risk of falling and would benefit from assisted technology in order to remain independent and in their own homes. The Package will include the following:

- Lifeline 400 (alarm unit)
- Fall Detector
- Bed occupancy sensor (Night time inactivity monitoring)
- Key safe

The monthly cost to the client for this package including monitoring will be £42.08

Package 4 – Standard Package

This will continue to be aimed at the current customer base and will include:

- Lifeline 400 (alarm unit)
- Pendant

The monthly cost to the client for this package including monitoring will be £15.60

The CECS also provides monitoring services for other social alarm providers across the county, which include local authorities, Registered Social Landlords (RSL's) and charities. Other Surrey authorities currently monitored by the CECS are Epsom and Ewell, Elmbridge, Waverley, Surrey Heath and Woking.

Following our discussions with Surrey Fire and Rescue Services it is proposed that a monitored Fire Safety Package could be introduced for vulnerable residents identified by the Fire Service who would currently be provide with a standard audible smoke detector.

Fire Safety Package

- Lifeline 400 (alarm unit) & pendant
- 2 Radio Smoke Detectors
- Key Safe

The cost of purchasing the above equipment is as follows:

Fire Safety Package	Purchase Cost
Lifeline 400	£120.00
Smoke Detector x 2	£104.00
Key Safes	£29.32
Total Purchase Cost	£253.32

The cost of monitoring the above if the units were purchased by the Local Committee funding or the resident would be £1.25 per week (£65 per annum).

Alternatively the County Council or resident may not want to take on the capital cost of purchasing the equipment but lease it instead from the CECS on a weekly basis.

The cost of leasing the equipment would be as follows:

Fire Safety Package	Weekly	Monthly	Quarterly	Annual
Lifeline 400	£3.00	£12.99	£39.00	£156.00
Smoke Detector x 2	£2.00	£8.66	£26.00	£104.00
Key Safes	£0.56	£2.44	£7.33	£29.32
Total lease cost	£5.56	£24.09	£72.33	£289.32

These packages will includes all the equipment, monitoring twenty-four hours a day, three hundred and sixty five days a year, two checks per year and a response service if the client contacts are not available.

In the main only residents living in sheltered accommodation currently benefit from monitored smoke and fire detection services, but with the introduction of new sensors this can be expanded to benefit residents who remain in their own homes.

The following statistics give an indication of the benefits of providing this service (1st March 2004 – August 23rd '04).

Fire alarm calls from sheltered schemes (excluding test calls)

Guildford	77
Waverley	46
Woking	5
Surrey Heath	38
Epsom and Ewell	17
Elmbridge	26

Fire Alarm Total: 209

Smoke detector calls from sheltered schemes (excluding test calls)

Guildford	--
Waverley	123
Woking	3
Surrey Heath	--
Epsom and Ewell	5
Elmbridge	18

Smoke Detector Total: 149

For this same period CECS was only able to identify 6 alarm calls with a smoke detector activating in the background from residents living in their own home – Alarm button being pressed to indicate a problem by the resident.

**BOROUGH MANAGER'S BRIEFING FOR GUILDFORD LOCAL COMMITTEE
DECEMBER 2004**

The following initiatives are being targeted in the borough in addition to core PPI activities.

CF1. To reduce fires in unoccupied premises, specifically within Woodbridge Road and within the Borough of Guildford as a secondary objective. Following a number of fires and rescues carried out by SFRS, it became apparent that SFRS were at the frontline of support and other agency partnerships required developing.

CF2. To raise the profile of Community Safety literature to rural communities. The rural communities within the Borough of Guildford do not have direct access to fire stations and CFS literature. To overcome this area of weakness, working in partnership with the library services, CFS literature will be placed on the vehicles visiting the rural communities. This literature will cover the whole of the service area. To support this approach, an appliance from Guildford will attend the library sessions within the villages for 30 minutes offering advice and home fire risk assessments.

CF3. To provide monitored automatic fire alarms to vulnerable groups and work in partnership with Guildford Borough Council Emergency Communication Service. The Guildford Emergency Communication Services monitors personal alarms within vulnerable groups. Due to the increased technology, this personal alarm process can be extended to include smoke detection linked to the alarm through the phone network.

CF4. To reduce incidents of arson within business premises. Provide a targeted response to arson at business premises within the Borough of Guildford. Stage 1 – raise profile of arson to Safer Guildford Partnership, JAG and Guildford Borough Council Cleansing Department. Stage 2 – utilise business arson awareness leaflet and Guildford Borough Council Trade Waste Guide to target business within the area. Stage 3 – utilise arson taskforce vehicles with a follow up campaign in the population centres within the Borough during the months of November and December.

CF5. To raise the profile of the SFRS, provide a presence at the County Show and target community safety, road safety, education, arson reduction and youth inclusion. Provide a targeted response and attendance at the County Show on Monday, 30th May 2005.

CF6. To raise the profile of the SFRS and its role within RTC. Within the Borough of Guildford RTCs are one of the highest service pressures and in line with the IRMP process, a targeted response to the reduction of RTCs is required. One of the objectives is work with Pub Watch to reduce RTCs. Working in partnership with Pub Watch, Police and road safety, raise the profile of drink/driving prevention through attendance at Safer Guildford Partnership and JAG meetings and carry out a joint campaign with the Police in Guildford following their request.

CF7. To raise the profile of the SFRS and its role within community safety. Within the Borough of Guildford licensed premises accommodate large numbers of revellers, particularly in Guildford. During Performance Inspections will be carried out on all premises over a period of time and high use premises will be targeted more frequently. Working in partnership with Pub Watch, Police and Guildford Borough.

Item 15 Annexe 5

Council, target licensed premises for community safety. SFRS to lead project and target all premises in a four-stage response. Nightclubs will be targeted in November, late bars and high volume capacity will be targeted in December. All licensed premises will be visited by September 2005 and private clubs will be visited by October 2005.

CF8. To raise the profile of the SFRS and its role within community safety. Within the Borough of Guildford there is a high incidence of arson and one method to target arson and arson reduction is through education. At this current time, no secondary schools are targeted. Working in partnership with schools education, an officer to visit all secondary schools to talk to students. In addition to the talk, and as an opportunity to gain access to the school, Guildford Borough Management Team will hand-deliver an introductory letter and use the opportunity to work with risk management on arson prevention in schools and also build up partnerships with the schools for future community safety initiatives. The Guildford Borough Management team will make the initial contact, carry out the safety inspection, provide documentation and urge the school to book up a school liaison specialist.

CF9. To raise the profile of the SFRS and its role within community safety. Target the community of Surrey and Sussex through community safety messages. Working in partnership with BBC Southern Counties, carry out a radio interview on an approximately monthly basis using the national campaign and local responses. Attend BBC Southern Counties Radio and County Sound for regular radio slots targeting 100,000+ persons.

CF10. To support the community within Gomshall by providing partnership assistance to the Police and allowing the use of the premises for occasional administrative tasks by local officers. Working in partnership with Surrey Police, allow the use of Gomshall Fire Station for a meeting room and administrative facility. The police and local support officers would like to use the premises occasionally, using the toilet facilities and the desk, enabling them to complete their paperwork. The benefits of this approach will allow the Police more time in the community, reducing their administrative time and also provide an occasional security presence for the SFR&S.

CF11. To support the community within the University of Surrey and in particular, the multi-racial and multi-language students with fire safety information. The University of Surrey has a large population that stay on site in dedicated accommodation, off-site in accommodation provided by the University and in accommodation sought by the students. To provide a community safety leaflet in English to the students attending the academic year. To provide a community safety leaflet in 100 languages for students attending from countries outside the UK during the holiday periods. Working in partnership with the University to upgrade the old documentation and produce a joint leaflet with joint identification badges ensuring that the community safety reaches every student and its importance is improved through targeting and is not lost in normal University labelled documentation.

CF12. To support the community within the Borough of Guildford by providing a risk-assessed and planned approach to major events. Plans to be produced for identifiable events using a PPI approach. To provide a community safety plan based on a PPI approach. The plan to include an introduction, background information and identified protection, prevention and intervention activity. This approach will ensure that the old format of an operational plan is updated to a community focused approach and

Item 15 Annexe 5

will ensure that major events in Guildford have a detailed plan with the focus on protection and prevention. The plan will detail actions within this approach.

CF13. To reduce incidents of arson within school premises. Provide a targeted response to arson at school premises within the Borough of Guildford. Stage 1 – send arson prevention leaflet together with covering letter to all schools within Borough in December 2004. Stage 2 – follow up visit to all schools by crews. Stage 3 – link arson prevention to school education in targeted response by Borough Manager team and school education officer from April 2005.

CF14. To ensure that community safety advice is provided effectively regarding HMOs and relevant information is then provided to ensure that future P&P advice can be given and intervention activities improved by placing plans onto the mobile data. HMOs are not part of the Fire Service legislation but have historically presented us with numerous problems that have included the issue of Section 10 notices and fire safety advice. In a large proportion of the premises, they are complex buildings and the occupancy may cause concern. To provide an effective response, particularly to the intervention teams, by the provision of a CAD plan. These plans to be provided by Guildford Borough Council.

CF15. To provide a safe room for individuals suffering domestic violence within their own home. Fire safety advice to be provided and partnership working on this initiative to be provided to ensure that Fire & Rescue together with the police objectives are met. Following the success of the Harrow Sanctuary Project, Surrey Police are considering introducing a similar project into Surrey and Guildford will be used as a pilot. To ensure that we are represented and PP&I issues are resolved, Guildford Borough team will support this project although it must be stressed that it remains a confidential project, because of the sensitivity and nature of those involved.

Bob Weldon-Gamble
Borough Manager Guildford